

A Brief Progress Report Of NRHM

Bongaigaon district



Upto Sep 2009

District Health Society, Bongaigaon

Health Infrastructure

Govt. Health Institutions:

Type of Health Institutions	No. of Health Institution
Civil Hospital	1
BPHC [Block Primary Health Centre]	4
CHC [Community Health Centre]	1
CHC functioning as FRU [First Referral Unit]	1
MPHC [Mini Primary Health Centre]	16
SD [State Dispensary]	7
UHC [Urban Health Centre]	1
SC [Sub-Centre]	57
SC [attached with CHC/BPHC/MPHC/SD]	27
RCH Outreach Centre [Reproductive & Child Health]	18
Total	133

Private and other Health Institutions:

Railway Hospital	1
Pvt. Hospital	5
Railway Dispensary	1
Rural Family Welfare Centre	4
Blood Bank Facility	2

The above table shows the health infrastructure in Bongaigaon district.

Human Resources in the district

The district has total (regular+contractual) 781 nos. of staffs including 19 Specialist, 54 MBBS, 18 MO(Ayu), 3 Dental Surgeon, 2 Physician(Homoeo), 85 GNMs, 143 ANMs, 42 Lab. Technicians, 13 LHV's, 4 Opth. Asstt, 48 Pharmacist and 5 Radiographers.

Contractual staff under NRHM:

DPMU & BPMU:

The District Programme Management Unit is functioning District Programme Manager, District Media Expert, District Accounts Manager, District Data Manager and Computer Asstt. There are 4 Block Programme Management Units in 4 BPHCs in the district. The BPMU consists of Block Programme Manager, Block Accounts Manager and PHC Accountant cum ABPM.

Altogether 223 nos. of contractual staffs including 28 MO (MBBS), 12 MO (Ayu), 64 GNMs, 49 ANMs, 6 Pharmacists, 1 Radiographer, 20 L/Ts, 1 Accounts Manager & 16 PHC Acctt cum ABPMs are engaged under NRHM, Bongaigaon.

Projected population of the district for the year 2009:

BPHC	Population	Rural	Urban	Pregnant Women	Live Birth	Total infant	Total eligible couple	Total eligible couple for sterilization
Boitamari	127722	127722		3934	3576	3340	19158	1533
Bongaigaon	184454	95809	88645	4464	4058	3790	27668	2213
Manikpur	142377	142377		3446	3132	2926	21357	1709
Srijangram	262802	245844	16958	8094	7358	6873	39420	3154
District total	717355	611752	105603	19937	18125	16929	107603	8608

- Progress of different activities under NRHM -

1. JANANI SURAKSHA YOJANA

The Janani Suraksha Yojana is being implemented in Bongaigaon district from Jul 2006. After introduction of JSY, **Govt. Institutional delivery has increased from 7 % in 2005-06 to 36% in 2009-10.**

JSY beneficiary against Institutional Delivery:

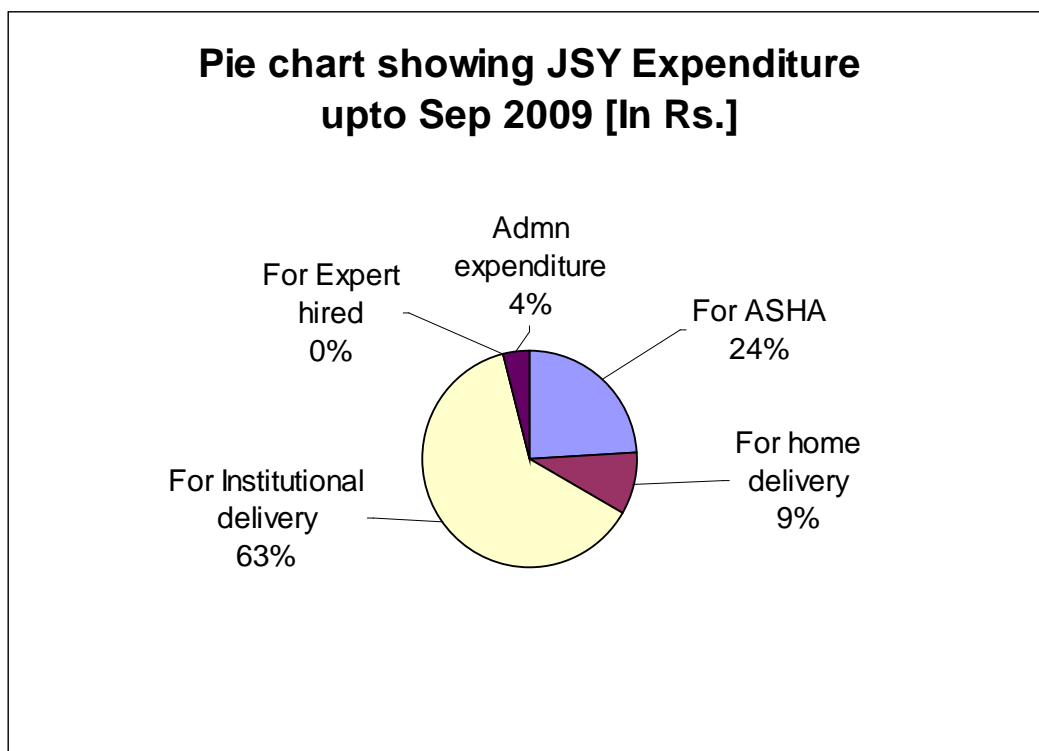
Since inception of JSY in the month of Jul 2006 total 18915 nos. of mothers received JSY money against Govt Institutional delivery and total 13483 nos. of Institutional delivery was facilitated by ASHA.

JSY beneficiaries against Home delivery:

Total 7528 nos. of mothers received JSY money against home delivery from Jul 2006 to Jul 2007. JSY payment against home delivery stopped from Aug 2007 as per Govt order and again allowed home delivery money from August 2008 as per previous guideline.

JSY financial status:

Total Rs. 4,03,18,454/- has been spent for Janani Suraksha Yojana since inception of the programme. The pie chart showing JSY expenditure break up-



2. REFERRAL SERVICES:

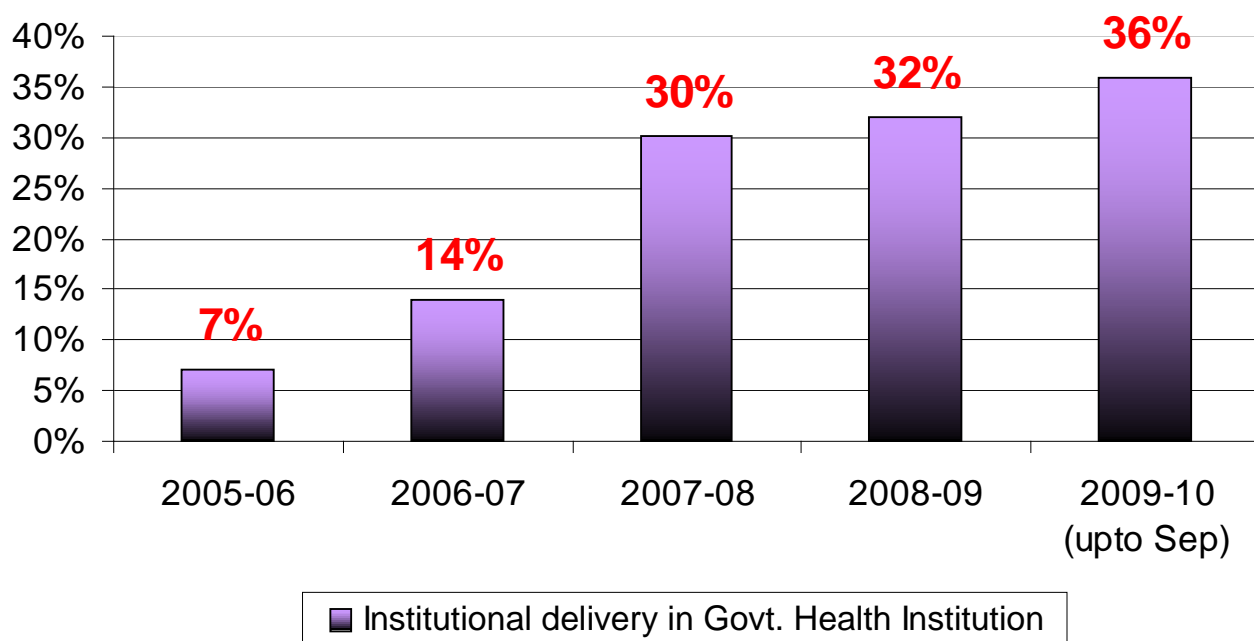
Starting from Jul 2006, total no. of 2320 Pregnant women with emergency obstetric complication and sick new born received Referral services. Total amount spent is Rs. 10,73,845/-

3. INSTITUTIONAL DELIVERY:

The following table and graph shows an increase in Institutional delivery in Govt Health Institutions from 7% in 2005-06 to 36% in 2009-10. However, the decrease in I.D. in 2008-09 under Manikpur Block is due to the fact that Bhetagaon CHC and Bijni SD under Manikpur BPHC where most of deliveries took place went under newly created Chirang BTAD from Apr 2008.

NAME OF BPHC	No. of Institutional delivery				
	2005-06	2006-07	2007-08	2008-09	2009-10 (upto Sep)
BALLAMGURI BPHC	269	461	1226	Now in Chirang	Now in Chirang
BOITAMARI BPHC	85	193	609	571	337
BONGAIGAON BPHC	508	935	1603	2517	1449
MANIKPUR BPHC	248	1021	2232	750	370
SIDLI BPHC	181	280	743	Now in Chirang	Now in Chirang
SRIJANGRAM BPHC	369	607	1361	1731	1152
TOTAL	1660	3497	7774	5569	3308

Chart showing increase in Govt. Institutional delivery since 2005-06



Health Institution wise Institutional delivery comparison for 2008-09 and 2009-10

SL	NAME OF HEALTH INSTITUTION	2008-09(APR-SEP)	2009-10(APR-SEP)	% increased
1	ABHAYAPURI FRU	425	593	40%
2	BONGAIGAON FRU	957	1166	22%
3	BIDYAPUR CHC	134	200	49%
4	BOITAMARI PHC	163	175	7%
5	BIRJHORA TEA ESTATE HOSPITAL	2	7	250%
6	MANIKPUR PHC	389	366	-6%
7	SRIJANGRAM PHC	93	95	2%
8	CHALANTAPARA MPHC	103	136	32%
9	DUMERGURI MPHC	134	252	88%
10	DHANTOLA MPHC	15	4	-73%
11	CHAKLA SD	103	196	90%
12	LENGTISINGA MPHC	8	11	38%

13	CHAPRAKATA MPHC	11	58	427%
14	CHIPANSILA MPHC	7	18	157%
15	PACHANIA MPHC	8	5	-38%
16	PATILADAHA MPHC	4	4	0%
17	BISHNUPUR SD	9	22	144%
	TOTAL	2565	3308	29%

Based upon the highest no. of delivery conducted in FRU/ CHC in the month of Sep 2009, the top 3 FRU/CHC in Bongaigaon district are-

- 1) Bongaigan CHC(FRU)=240
- 2) Abhayapuri CHC(FRU)=137
- 3) Bidyapur CHC=41

Based upon the highest no. of delivery conducted in BPHC/MPHC/SD in the month of Sep 2009, the top 3 BPHC/MPHC/SD in Bongaigaon district are-

- 1) Manikpur BPHC(24x7)=72
- 2) Dumerguri MPHC=64
- 3) Chakla SD (24x7)= 58

4. VILLAGE HEALTH AND SANITATION COMMITTEE & ASHA:

Total no. of VH&SC formed is 648 and total no. of VH&SC operational with Joint A/C is 610. BPHC wise total VHSC

Name of Dev Block	Name of Block PHC	No. of Revenue Village/ Ward/ Rly Colony	VH&SC
Boitamari	Boitamari	166	119
Dangtal	Bongaigaon	134	140
Manikpur	Manikpur	94	138
Srijangram	Srijangram	118	251
Tapattari		98	
TOTAL		610	648

All the ASHAs received upto 5th Modular training and are provided with Drug Kit, Radio & Umbrella.

5. EVENING OPD:

Evening OPD services which is introduced in 8 Health Institutions phase wise from May 2008 has been running successfully in Bongaigaon district. Performance of EOPD with a comparison to the Day OPD is given below:

Sl. No.	Name of the Institution	Total (From May'08-Sep'09)						Remarks
		No of Patient		No of Laboratory Investigation		No of Radiological Investigation		
		Day OPD	Evening OPD	Day OPD	Evening OPD	Day OPD	Evening OPD	
1	Bongaigaon CHC	11248	787	1521	101	326	63	EOPD started on 7/5/08 & closed on 8/9/08
1	Bidyapur CHC	25832	7619	2555	511	0	0	EOPD started on 7/5/08
2	Abhayapuri CHC/FRU	59515	5297	7697	707	581	100	EOPD started on 5/5/08
3	Boitamari BPHC	26827	3732	6198	1040	0	0	EOPD started on 10/9/08
4	Bongaigaon BPHC	15725	7039	1371	623	0	0	EOPD started on 10/9/08
5	Manikpur BPHC	24775	3300	4592	432	0	0	EOPD started on 11/9/08
6	Srijangram BPHC	16488	4241	2231	480	0	0	EOPD started on 10/9/08
7	Chalantapara MPHC	42248	12556	4364	811	0	0	EOPD started on 25/9/08
	TOTAL	222658	44571	30529	4705	907	163	

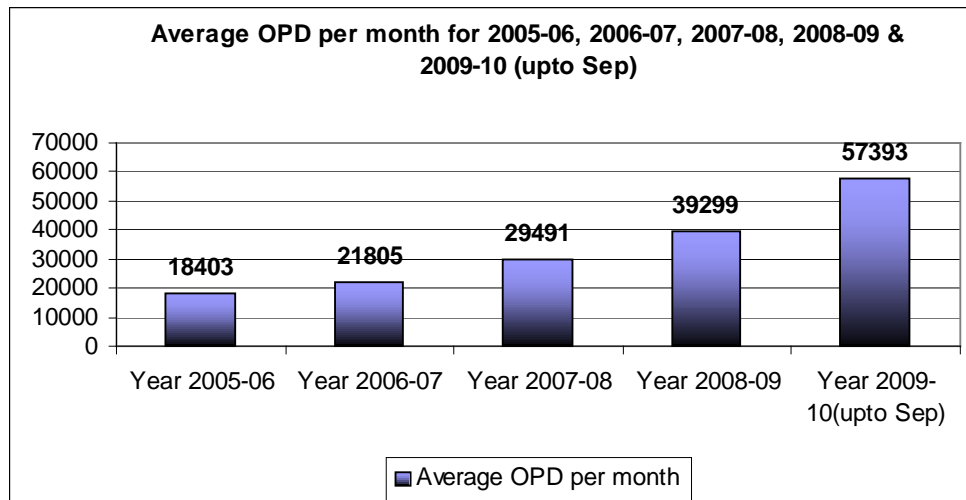
Chalantapara MPHC has highest EOPD attendance during Sep '09 EOPD with 1047 nos., Bongaigaon BPHC & Bidyapur CHC comes 2nd & 3rd with 575 and 437 nos.

6. OPD:

OPD performance in the Govt. Health Institutions increased from an average per month of 18403 nos. in 2005-06 to 57393 nos. in 2009-10.

Institution wise OPD performance is given below:

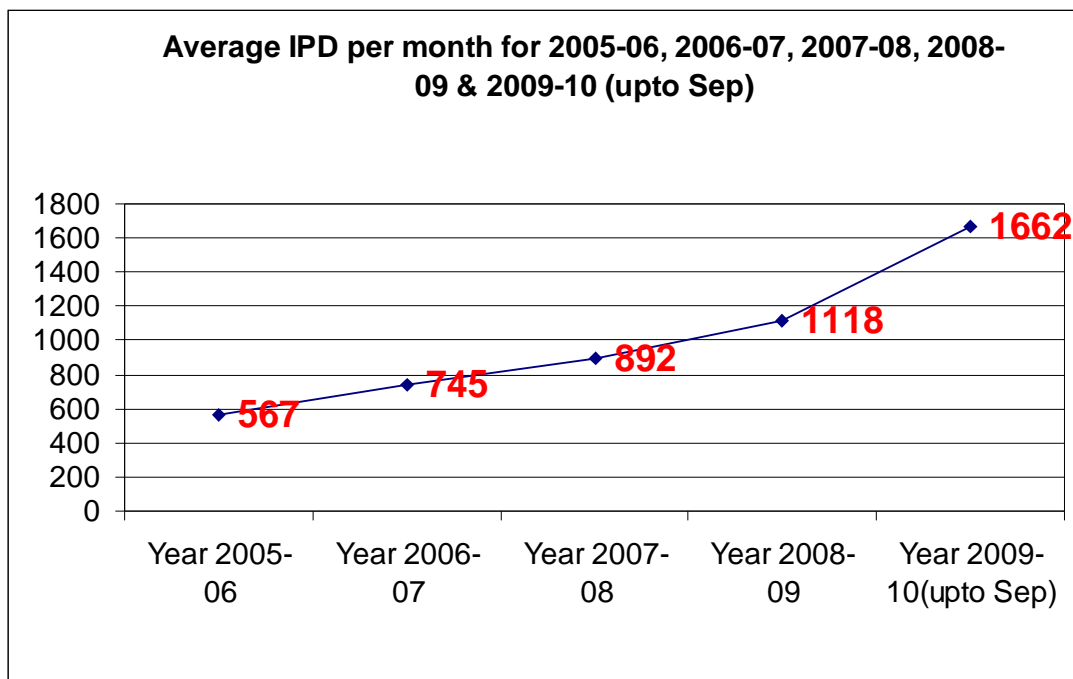
BLOCK PHC	SL	HEALTH INSTITUTION	2005-06	2006-07	2007-08	2008-09	2009-10 (upto Sep)
BOITAMARI PHC	1	BISHNUPUR SD	1857	2172	4421	7442	5812
	2	BOITAMARI BPHC	12575	13912	22934	25032	17676
	3	CHALANTAPARA MPHC	30154	35434	37488	42076	34387
	4	DHANTOLA MPHC	5612	6730	7666	7580	5442
	5	KACHUDOLA MPHC		10296	13684	19138	13087
BONGAIGAON PHC	6	BHAWLAGURI UHC	0			2405	7248
	7	BIDYAPUR CHC	20735	21756	29966	20185	15067
	8	BONGAIGAON BPHC	6010	5872	9137	17288	12351
	9	BONGAIGAON CH	18746	23007	25364	36264	25781
	10	CHAPRAKATA MPHC	4575	5098	5452	11897	8648
	11	CHIPANSILA MPHC	0	1535	4371	4228	3243
	12	KHAGARPUR MPHC	2093	3311	3119	6241	4628
	13	MAJGAON SD	0		1005	1884	1114
	14	MULAGAON MPHC	1622	1630	1496	2515	1734
	15	PANCHAPUR MPHC		2356	1920	2734	1918
MANIKPUR PHC	16	DOMPARA MPHC	0		13380	15975	15372
	17	FAGUNAGAON MPHC	0			12886	12005
	18	JHAWBARI SD	3109	5173	11139	10850	7733
	19	MANIKPUR BPHC	12365	13328	23904	23985	15558
	20	PATILADAHA MPHC	4250	5760	12028	11297	7026
SRIJANGRAM PHC	21	ABHAYAPURI CHC	29070	33915	35885	43301	26893
	22	ABHAYAPURI SD	9330	10036	10933	11994	5520
	23	AMGURI MPHC	7151	7583	7437	9040	8797
	24	CHAKLA KOKILA SD	9505	10124	13074	25432	14700
	25	DUMERGURI MPHC	4230	5193	8350	17160	10755
	26	LENGTISINGA MPHC	6110	6523	7239	17029	9866
	27	NORTH SALMARA SD	3669	3616	3573	4070	2390
	28	PACHANIA MPHC	9146	6191	9413	17548	12050
	29	RANGAPANI SD	2525	3716	8962	12800	10672
	30	SIDALSATI MPHC	8250	9656	11983	17778	13740
	31	SRIJANGRAM BPHC	8144	7740	8570	13529	13142
		TOTAL	220833	261663	353893	471583	344355



7. IPD:

IPD performance in the Govt. Health Institutions has increased from an average per month of 567 nos. in 2005-06 to 1662 nos. in 2009-10.

SL	BPHC	HEALTH INSTITUTION	2005-06	2006-07	2007-08	2008-09	2009-10 (upto Sep)	REMARKS
1	BOITAMARI PHC	BOITAMARI BPHC	724	850	1263	1725	1702	24X7 HR SERVICES
2	BONGAIGAON PHC	BONGAIGAON CH	2614	3837	4284	3507	2976	FRU
3	BONGAIGAON PHC	BIDYAPUR CHC	824	956	1351	4225	2763	CHC
4	MANIKPUR PHC	MANIKPUR BPHC	605	691	920	1130	542	24X7 HR SERVICES
5	SRIJANGRAM PHC	ABHAYAPURI CHC	2031	2604	2882	2812	1989	FRU
		TOTAL	6798	8938	10700	13412	11971	



8. VILLAGE HEALTH & NUTRITION DAY:

Village Health & Nutrition Day (VH&ND), which is organized in every AWC in every village by ASHA. Starting from Nov 2006 total 17073 nos. VH&ND have been organized.

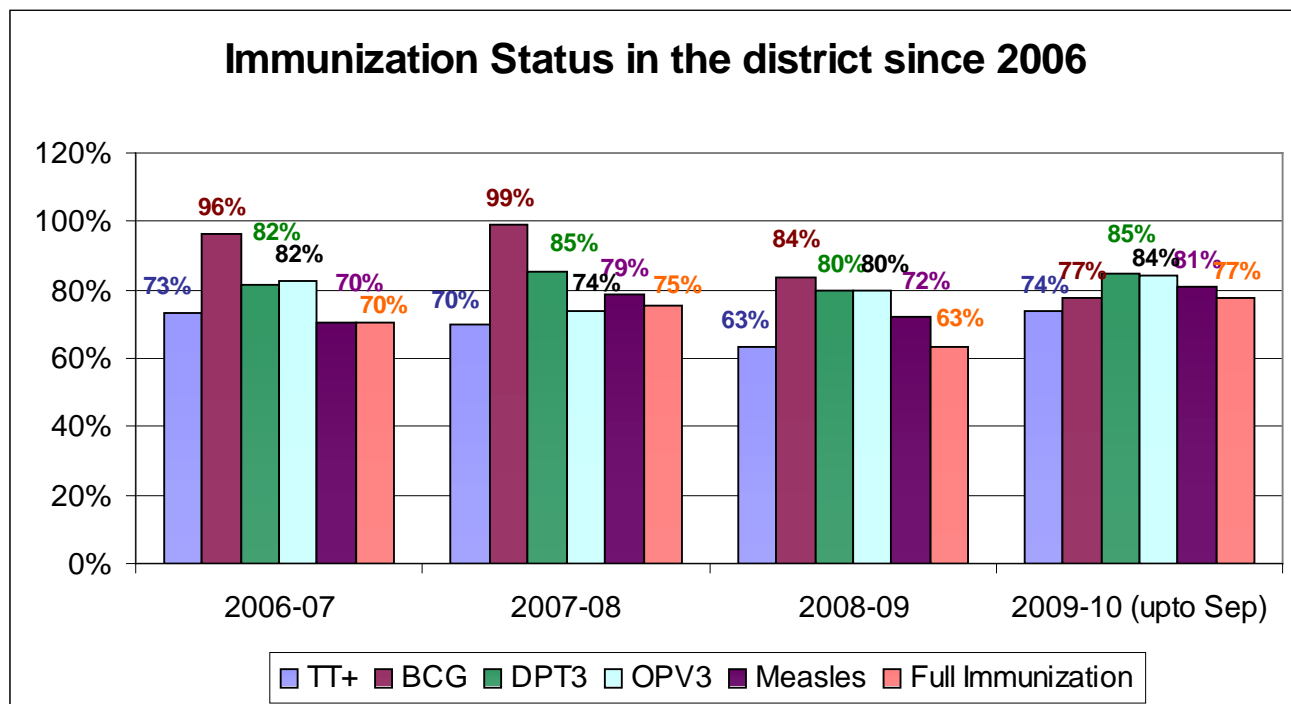
NAME OF BPHC	2006-07	2007-08	2008-09	2009-10 (upto Sep)	GRAND TOTAL
BALLAMGURI PHC	642	1586	Now under Chirang BTAD	Now under Chirang BTAD	2228
BOITAMARI PHC	218	795	1056	536	2605
BONGAIGAON PHC	125	584	1195	718	2622
MANIKPUR PHC	367	1309	1049	612	3337
SIDLI PHC	568	1199	Now under Chirang BTAD	Now under Chirang BTAD	1767
SRIJANGRAM PHC	551	1415	1712	836	4514
TOTAL	2471	6888	5012	2702	17073

9. IMMUNIZATION STATUS:

Rate of fully immunized infant for 2008-09 is 63%. While, it was 70% and 75% respectively in the year 2006-07 and 2007-08. 5 rounds of Special Immunization Week held in the year 2006-07 and 2007-08 has increased the immunization performance of the district in the last 2 years. However lack of measles vaccine

supply for more than one month and AEFI incident of the measles vaccine in various places decreased the measles performance in the year 2008-09.

Chart showing immunization status in the last 3 years of the district. The analysis based on projected population.



10. FAMILY WELFARE

Total nos. of female sterilization and IUD insertion in the last 3 years is given below.

Sl	Programme	2006-07	2007-08	2008-09	2009-10 (upto Sep)
1	NSV	0	0	0	41
2	No. of Laparoscopic sterilization cases			315	3
3	No. of PPS	96	107	90	53
4	No. of IUD insertion	1083	1369	442	152

Lack of trained/ skilled manpower and proper facility the family welfare performance is low in the district.

11. CIVIL WORKS

The construction of 200 Bedded district hospital is going on near Hatimutra, Bongaigaon. 3 nos. of CHC have been upgraded to IPHS. Repairing/ renovation works for 91 nos. of SC/MPHC/BPHC/CHC have been completed. 22 nos. of labour room have been constructed. Works for construction of staff quarter in 7 nos. CHC/BPHC/MPHC is going with an amount Rs. 216.4 L. New building construction for 33 nos. of Sub-centres are also going on.

The details of construction works is given below:

Activity	Physical target	Total sanctioned amount [in lakh]	Physical progress
1. Repairing and renovation of MPHC/ SD	16	Rs. 8.5 L.	Completed all
2. Repairing and renovation of SC (1 st phase)	14	Rs. 4.5 L.	Completed all
3. Repairing and renovation of SC (2 nd phase)	51	Rs. 40 L.	Completed all
4. Construction of Labour Room for Boitamari, Srijangram & Manikpur BPHC	3	3 nos. x Rs. 5.3 L. = Rs. 15.90 L.	Completed all
5. Repairing of Ballamguri, Boitamari, Bongaigaon, Manikpur, Sidli & Srijangram BPHC	6	6 nos. x Rs.1 L.= Rs. 6 L.	Completed all
6. Repairing of CHC for Abhayapuri, Bhetagaon, Bidyapur &	4	4 nos. x Rs. 2 L. =	Completed all

Activity	Physical target	Total sanctioned amount [in lakh]	Physical progress
Bongaigaon CHC		Rs. 8 L.	
7. MPHC/ SD 24x7 Hr Labour room construction for Borobazar SD, Champa MPHC, Bisnupur SD, Chalantapara MPHC, Chiponsila MPHC, Chaprakatra MPHC, Patiladaha MPHC, Chakla SD, Lengtisinga MPHC, Pachania MPHC	10	10 nos. x Rs. 5 L. = Rs. 50 L.	Completed all and functioning
8. CHC upgradation for IPHS 3 nos.	3	3 nos. x Rs. 40 L. = Rs. 120 L.	Completed all
9. New building construction for 33 nos SCs	33	33 nos. x Rs. 7.5 L = Rs. 247.5 L.	17 nos. completed.
10. Block pooling of Rs. 1 crore for Abhayapuri CHC for staffs Quarter	1	1 no. x Rs. 100 L. = Rs. 100 L.	Completed.
11. New Quarter construction for Doctor/ nurses quarter for Boitamari PHC, Jhawbari SD, Chakla Kokila SD	3	3 nos. x Rs. 28.8 L = Rs. 86.4 L	Boitamari & Chakla completed.
12. Quarter repairing for Abhayapuri CHC, Boitamari PHC, Srijangram PHC	3	3 nos. x Rs. 10 L. = Rs. 30 L.	Completed all
13. 200 Bedded District Hospital	1	1 no. x Rs. 10,00 L. = Rs. 1000 L.	Work in progress
14. Labour room construction for MPHC/SD for 24x7	11	11 x Rs. 6.0 L = 66.0 L	9 completed
15. Quarter repairing	23	23 x Rs. 6.0 L = Rs. 138.0 L	21 completed
16. Stabilization Unit for Sick new born	7	7 x Rs. 4.2 L = Rs. 29.4 L	Work in progress
17. Ward construction	5	5 x Rs. 7 L = Rs. 35 L	Work in progress
Total Sanctioned amount		1992.254 L	

12. BHAWLAGURI URBAN HEALTH CENTRE:

Bhawlaguri Urban Health centre is set up in Bhawlaguri slum area near New Bongaigaon. The Health Centre is started functioning from 31/1/2009. Total 9898 OPD patients received treatment in Bhawlaguri UHC upto Sep 2009.

13. MOBILE MEDICAL UNIT (MMU):

MMU service started from 30/12/2008 in Bongaigaon district. Performance of MMU is given below:

Month	Dec'08	Jan'09	Feb'09	Mar'09	Apr'09	May'09	Jun.09	Jul'09	Aug'09	Sep'09	Total
No of Camps held	1	16	15	19	14	17	20	18	15	11	146
No of Patient Treated	204	819	838	937	794	1032	1945	1833	1108	950	10460
No of ANC	0	9	4	5	13	8	20	18	9	11	97
No of PNC	1	3	0	1	0	0	0	4	8	1	18
No of X-Ray	0	31	26	65	38	43	76	103	71	30	483
No of USG	0	0	0	1	0	0	0	0		0	1
No of ECG	0	0	0	0	0	0	0	0		0	0
No of Patient examined for Blood Test	0	19	3	0	5	22	75	112	52	2	290
No of Patient examined for Urine Test	0	12	8	8	9	11	22	14	14	11	109
No of Patient examined for Stool Test	0	0	0	0	0	0	0	0		0	0

14. PPP: Process for public-private partnership is going on. The signing of MoU for PPP will be done soon.

15. HMIS:

HMIS reporting system is being maintained in Bongaigaon district. HMIS report is uploaded into the HMIS webportal www.nrhm-mis.nic.in every month since Apr 2008. DPMU has also developed Bongaigaon district's website www.nrhmbongaigaon.net, which is updated every month with all the up-to-date information and monthly progress reports of the district.

16. HEALTH MELA

Total 8 nos. of Health Melas held in Bongaigaon Total 18628 nos. of patients received free treatment and medicines in the Health Mela. The details is given below-

Sl	Year	From Date	To Date	No of days	Place	No of Patient Treated
1	2007-08	24th Apr 2007	24th Apr 2007	1	Jhawbari HS School	2710
2		26th Apr 2007	26th Apr 2007	1	Srijangram MV School	2450
3		27th Apr 2007	27th Apr 2007	1	Boitamari HS School	2274
4	2008-09	5th Apr 2008	6th Apr 2008	2	Chipansila LP School	2679
5		7th Apr 2008	7th Apr 2008	1	Patiladaha High School	3047
6	2009-10	30th May 2009	30th May 2009	1	Bhandara under Manikpur BPHC	1730
7		1st June 2009	1st June 2009	1	Panchagaon under Boitamari BPHC	1492
8		2nd June 2009	2nd June 2009	1	Ambari Campara under Srijangram BPHC	2246
Total:						18628

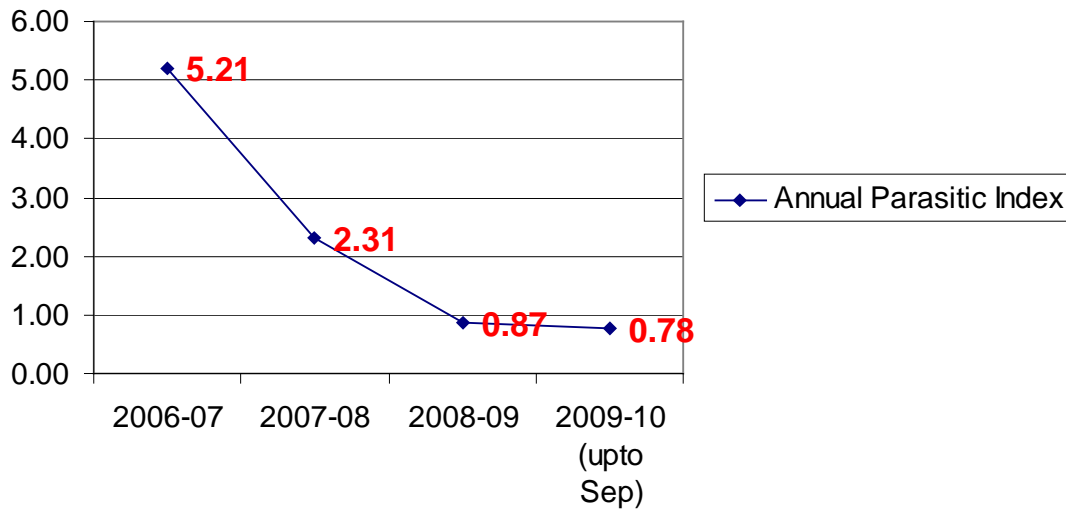
17. DISEASE CONTROL PROGRAMME

a. National Vector Borne Disease Control Programme

The performance of National Vector Borne Disease Control Programme has shown that API rate has decreased from 5.71 in 2006 to 0.78 in 2009.

	Indicator	2006-07	2007-08	2008-09	2009-10 (upto Sep)
DISTRICT TOTAL	Popultaion	697417	711359	703289	717355
	BSC	66609	66010	68892	62555
	BSE	66609	66010	68892	62555
	Malaria PV	566	259	55	38
	Malaria PF	3069	1387	558	519
	Total positive cases	3634	1646	613	557
	Annual Parasitic Index	5.21	2.31	0.87	0.78
	ABER	10%	9%	10%	9%
	SPR	5%	2%	1%	1%
	SFR	5%	2%	1%	1%
PF%	84%	84%	91%	93%	

Chart showing Malaria Annual Parasitic Index (API) decreasing since 2006



b. District Blindness Control Programme

Year wise performance of IOL implantation is given below:

	2006-07	2007-08	2008-09	2009-10 (Sep)
Total no. of IOL implanted	381	458	164	14